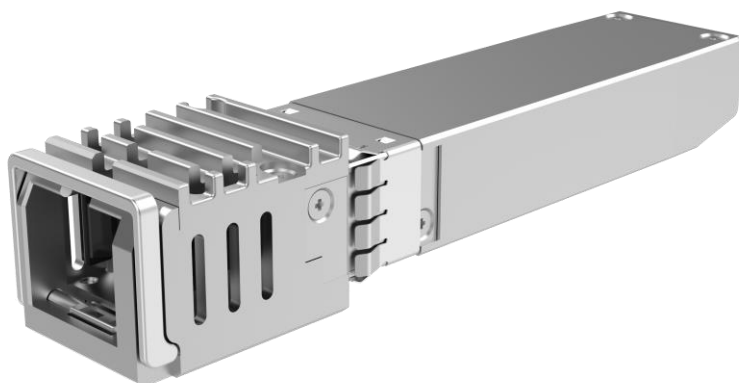


Huawei OptiXstar S800E Datasheet

XGS-PON SFP ONU

Product Overview

Huawei OptiXstar S800E is a miniature XGS-PON SFP ONU device that can be inserted into the SFP port of a camera or AP device to provide XGS-PON access for the device to meet the requirements of video backhaul or wireless backhaul.



NOTE

- The device supports a maximum of 256 MAC addresses. Ensure that the number of MAC addresses accessing the device does not exceed 256.
- Before connecting a Huawei AP or AR to the device, test the functions, heat dissipation, and power supply of the products to ensure that they meet the requirements.
- Before connecting a non-Huawei AP or AR to the device, test the functions, heat dissipation, and power supply of the products under the assistance of the product vendors to ensure that they meet the requirements.

Product Highlights

- High bandwidth, support XGS-PON access.
- Small size and light weight, suitable for installation on camera or AP equipment.
- Supports -40°C to $+85^{\circ}\text{C}$ (Shell temperature) wide temperature range with strong environment adaptability.
- High reliability, type B dual-homing service protection, 50ms switching time.
- High security, support secure boot.
- Multi-network convergence, supporting hard-isolated.

Technical Specifications

Dimensions	65mm x 13.6mm x 12.6mm	System power supply	3.3 V
Weight	About 27 g	NNI	1*XGS-PON
Operating temperature	−40°C to +85°C(Shell temperature)	UNI	1*GE/2.5GE/5GE/10GE interface adaptive
Operating humidity	5%RH to 95%RH (non-condensing)	Maximum power consumption	2.3 W

Port Parameters

NNI	UNI
<ul style="list-style-type: none"> Port type: SC/APC Standard compliance: ITU-T G.9807 Receiver sensitivity: ≤-28dBm Overload optical power: ≥-9dBm TX optical power: 4dBm to 9dBm Extinction ratio (ER): ≥6dB Transmission rate: RX: 9.953 Gbit/s; TX: 9.953 Gbit/s TX wavelength range: 1260 nm to 1280 nm(Center wavelength:1270 nm) RX wavelength range: 1575 nm to 1580 nm(Center wavelength:1577 nm) 	<ul style="list-style-type: none"> GE/2.5GE/5GE/10GE interface adaptive


Function List

Smart O&M	Multicast	QoS
<ul style="list-style-type: none"> Variable-length OMCI messages Rogue ONT detection and isolation from the OLT PPPoE/DHCP simulation testing 	<ul style="list-style-type: none"> IGMP v2/v3 snooping MLD v1/v2 snooping Fast leave VLAN tag translation, transparent transmission, and removal for downstream multicast packets IGMP/MLD protocol packet rate limitation 	<ul style="list-style-type: none"> Ethernet port rate limitation 802.1p priority SP/WRR/SP+WRR Broadcast packet rate limitation Flow mapping based on the VLAN ID, port ID, or/and 802.1p
Common O&M	Security	
<ul style="list-style-type: none"> OMCI Dual-system software backup and rollback 802.1ag Ethernet OAM Optical link measurement and diagnosis 	<ul style="list-style-type: none"> MAC address filtering Hard-Isolated 	

Copyright © Huawei Technologies Co., Ltd. 2024. All rights reserved.

No part of this document may be reproduced or transmitted in any form or by any means without prior written consent of Huawei Technologies Co., Ltd.

Trademarks and Permissions

 HUAWEI and other Huawei trademarks are trademarks of Huawei Technologies Co., Ltd.

All other trademarks and trade names mentioned in this document are the property of their respective holders.

Notice

The purchased products, services and features are stipulated by the contract made between Huawei and the customer. All or part of the products, services and features described in this document may not be within the purchase scope or the usage scope. Unless otherwise specified in the contract, all statements, information, and recommendations in this document are provided "AS IS" without warranties, guarantees or representations of any kind, either express or implied.

The information in this document is subject to change without notice. Every effort has been made in the preparation of this document to ensure accuracy of the contents, but all statements, information, and recommendations in this document do not constitute a warranty of any kind, express or implied.

Huawei Technologies Co., Ltd.

Address: Huawei Industrial Base Bantian,
Longgang Shenzhen 518129 People's
Republic of China

Website: www.huawei.com