

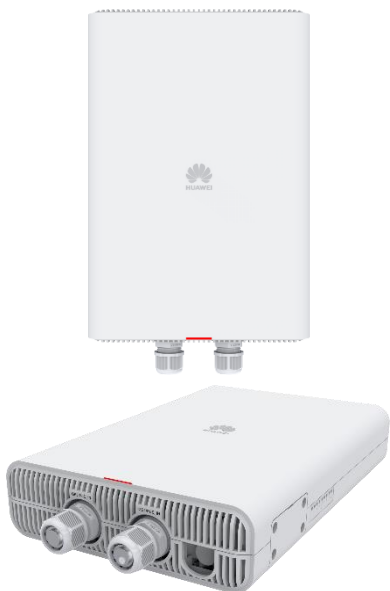
Huawei RU-5G-101 Datasheet

The RU-5G-101 is a high-speed wireless WAN access component that provides 5G wireless broadband access services for enterprises to implement wireless high-bandwidth data transmission.

Product Overview

The RU-5G-101 is a high-speed wireless WAN access component that provides 5G wireless broadband access services for enterprises to implement wireless high-bandwidth data transmission. This RU-5G-101 has an IP rating of IP65, so it is dustproof and waterproof and can operate normally even in harsh environments. It can be installed on a next-generation high-performance NetEngine AR series router and widely used in various service scenarios.

Appearance of Huawei RU-5G-101



- Fixed ports: 2 x GE electrical ports
- Support for 5G, 4G, and 3G
- Operating temperature: -40°C to $+70^{\circ}\text{C}$
- IP rating: IP65
- Dimensions (H x W x D): 65 mm x 220 mm x 330 mm
- Power supply mode: PoE

RU-5G-101

Features and Highlights

Features and Highlights of the RU-5G-101

Service Requirement	Features and Highlights
On-demand flexible configuration	<ul style="list-style-type: none"> • Used alongside a NetEngine AR series router. • Supports PoE power supply and flexible deployment. If the entire system does not support

Service Requirement	Features and Highlights
	<p>the PoE function, the PoE midspan is provided.</p> <ul style="list-style-type: none"> Supports dual SIM cards, single standby, and automatic switchover, providing high reliability.
Full frequencies and dual architectures	<ul style="list-style-type: none"> Supports 5G, compatible with 4G and 3G Supports both standalone (SA) and not-standalone (NSA) architectures.

Product Specifications

Specifications of the RU-5G-101

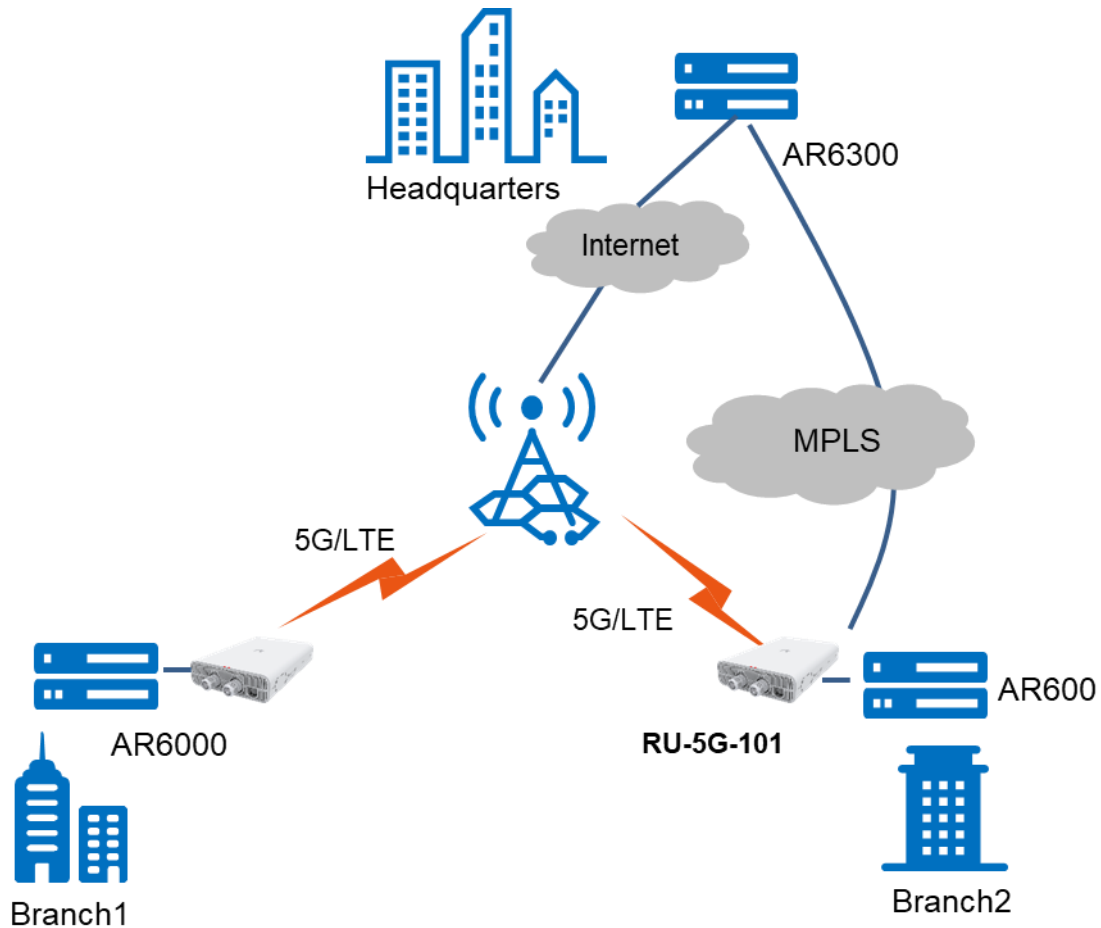
Specifications	Description
Frequency bands	
5G NR NSA	n1/n3/n5/n7/n8/n20/n28/n38/n40/n41/n77/n78/n79
5G NR SA	n1/n3/n5/n7/n8/n20/n28/n38/n40/n41/n77/n78/n79
LTE FDD	B1/B3/B5/B7/B8/B18/B19/B20/B26/B28/B32
LTE TDD	B34/B38/39/B40/B41/B42/B43
WCDMA	B1/B3/B5/B6/B8/B19
Hardware specifications	
Fixed ports	2 x GE RJ45 ports
Number of supported SIM cards	2
Antennas	Built-in 5G antennas
Antenna gain	<p>≥1dBi@698MHz ~ 960MHz</p> <p>≥2dBi@1710MHz ~2690MHz</p> <p>≥3dBi@3300MHz ~5000MHz</p>
IP rating	IP65
Power supply mode	PoE
Installation mode	Installed on a pole or wall
Operating temperature	−40 ° C to +70 ° C
Power supply redundancy	Support 1: 1 backup
Typical power consumption	10W
Maximum power consumption	12W
Heat dissipation	Natural heat dissipation, without fans
Dimensions (H x W x D)	65 mm x 220 mm x 330 mm

Application Scenarios

- **Flexible, Convenient 5G Wireless Access**

The RU-5G-101 can be installed on a next-generation high-performance NetEngine AR series router through an Ethernet port. It can then be configured and managed by the AR router as a remote component. The RU-5G-101 supports both NA and NSA architectures, meeting wireless interconnection requirements between enterprise branches as well as between enterprise branches and headquarters. In addition, the 5G data link can be used as a backup link for a wired link to protect the xDSL and GE/10GE uplinks of the AR router, improving network stability and accelerating network construction.

5G/LTE Wireless Access of Branches



Device Configuration

As a remote unit of a NetEngine AR series router, the RU-5G-101 can be selected as needed to provide the 5G wireless function.

Before selecting a NetEngine AR series router, determine the device model, cards (not involved for an AR610 series router), and software configurations.

- **Device model**

Determine the device model based on the number of slots, forwarding performance, and service requirements.

- **Cards**

The interface cards of Huawei NetEngine AR6000 series routers, including SIC, WSIC, and XSIC cards, are installed in service slots. Two SIC slots can be combined into one WSIC slot by removing the guide rail; two WSIC slot can be combined into one XSIC slot by removing the guide rail.

- **Software**

The software of Huawei NetEngine AR series routers includes basic software and licensed software. The basic software provides basic functions such as routing, switching, and security, whereas the licensed software provides supplementary functions such as WAC functions.

More Information


For more information, visit <https://e.huawei.com/en/> or contact us in the following ways:

- Global service hotline: <http://e.huawei.com/en/service-hotline>
- Logging in to the Huawei Enterprise technical support website: <http://support.huawei.com/enterprise/>
- Sending an email to the customer service mailbox: support_e@huawei.com

Copyright © Huawei Technologies Co., Ltd. 2021. All rights reserved.

No part of this document may be reproduced or transmitted in any form or by any means without prior written consent of Huawei Technologies Co., Ltd.

Trademarks and Permissions

 HUAWEI and other Huawei trademarks are trademarks of Huawei Technologies Co., Ltd.

All other trademarks and trade names mentioned in this document are the property of their respective holders.

Notice

The purchased products, services and features are stipulated by the contract made between Huawei and the customer. All or part of the products, services and features described in this document may not be within the purchase scope or the usage scope. Unless otherwise specified in the contract, all statements, information, and recommendations in this document are provided "AS IS" without warranties, guarantees or representations of any kind, either express or implied.

The information in this document is subject to change without notice. Every effort has been made in the preparation of this document to ensure accuracy of the contents, but all statements, information, and recommendations in this document do not constitute a warranty of any kind, express or implied.

Huawei Technologies Co., Ltd.

Address: Huawei Industrial Base
Bantian, Longgang Shenzhen 518129
People's Republic of China
Website: www.huawei.com